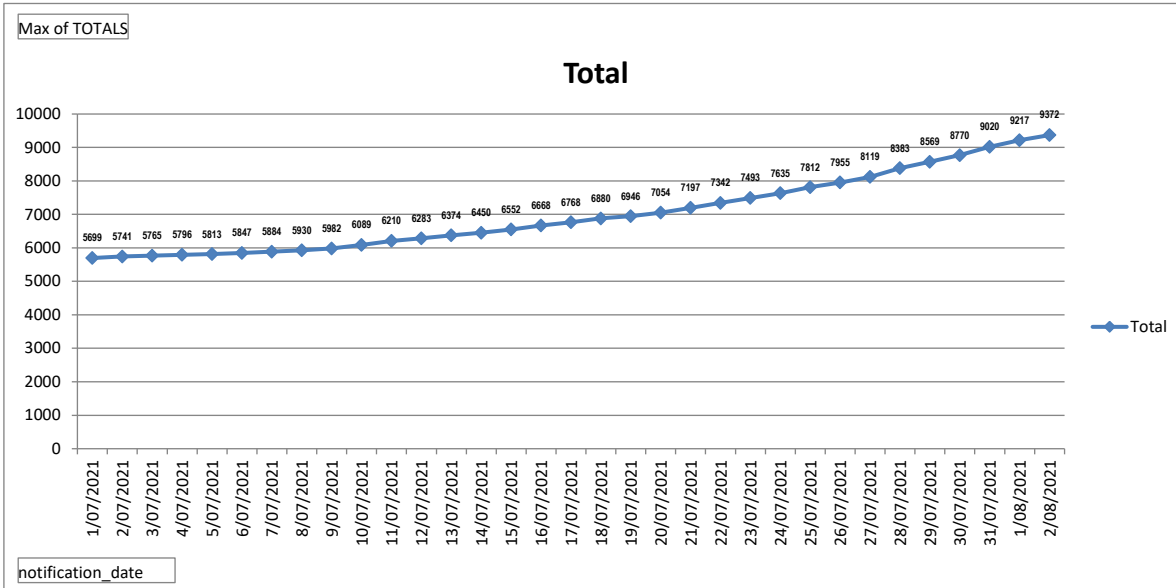
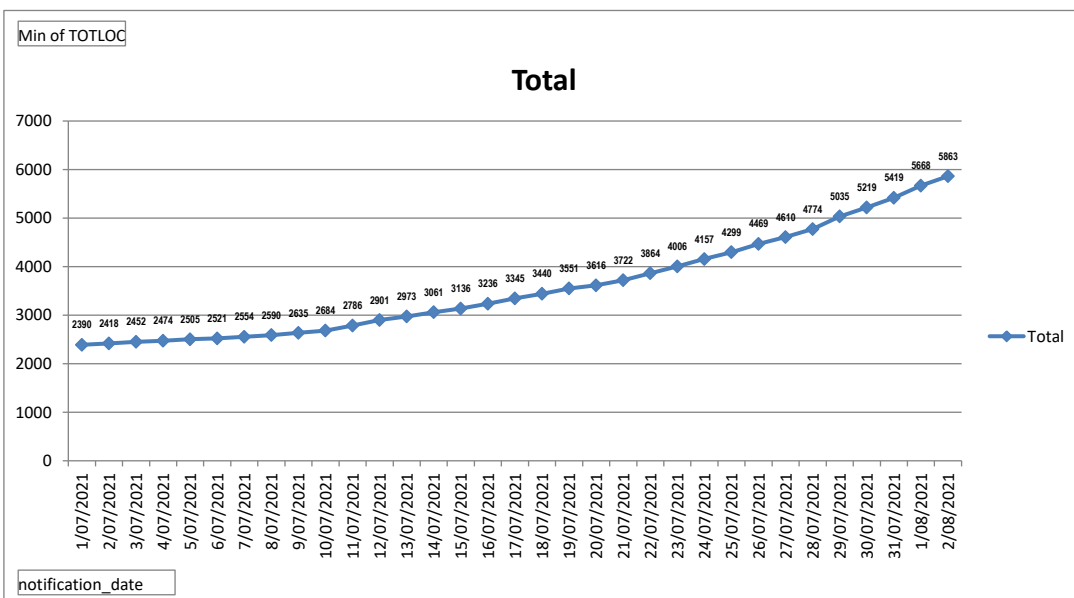


## NSW Total Cases



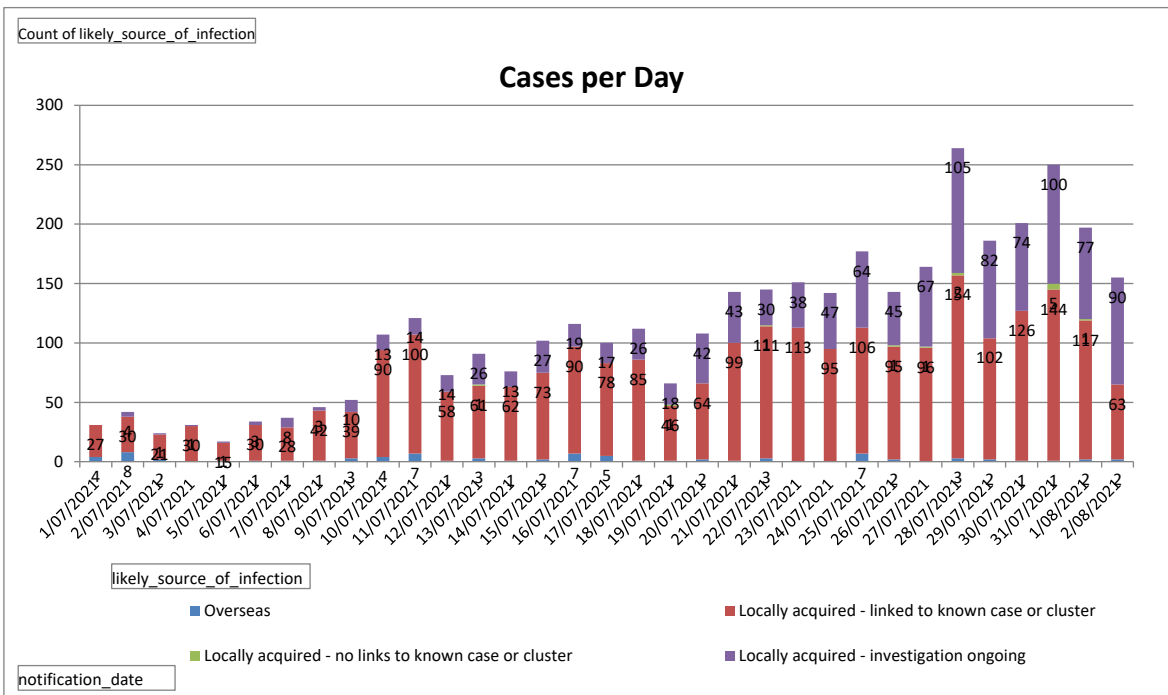
- NSW cases continue to climb, mostly locally transmitted
- **Reports updated to show data from 1st July to the present**

## NSW Totals of Locally Acquired Cases ONLY



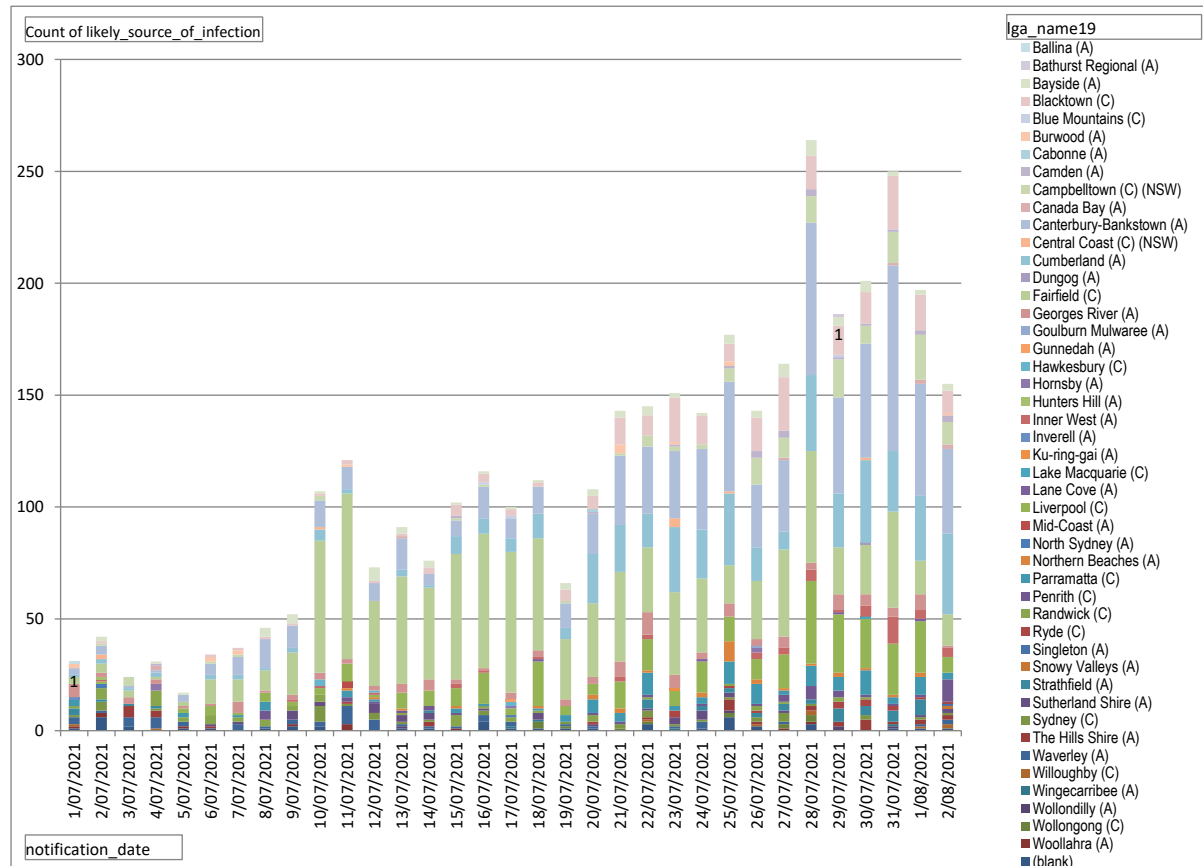
- The current outbreak started on 16th June and has increased daily, and so far continues to grow
- **The curve is showing sings of exponential grown now which is a very bad sign**

## NSW Cases by Day



- A total of 803 new cases in the last 4 days.
- From the 803, only 6 cases were overseas acquired with 797 cases locally acquired (99%) -- 341 from unknown sources (investigated)
- **341 Number of cases with unknown sources is too high now**

## NSW Cases by Area



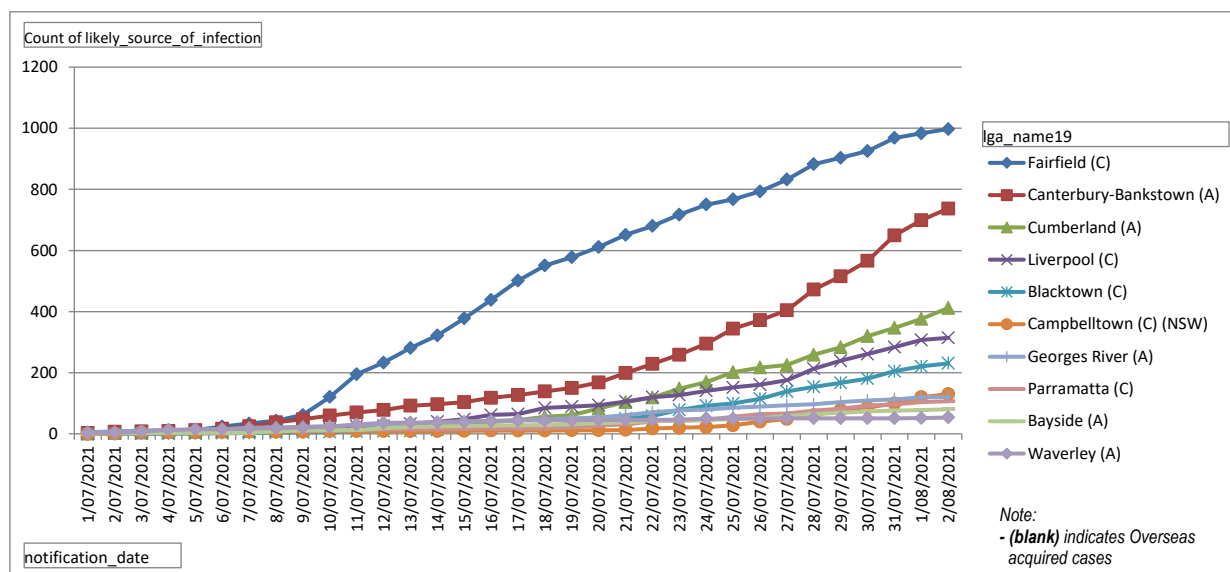
- A number of LGAs just got new cases two (2) week after the lockdown was announced (lockdown 21JUN, new cases after 05JUL) (they are: Bathurst Regional (A), Blue Mountains (C), Cabonne (A), Dungog (A), Goulburn Mulwaree (A), Gunnedah (A), Ku-ring-gai (A), Lake Macquarie (C), Lane Cove (A), Singleton (A), Snowy Valleys (A), Wingecarribee (A), Wollongong (C) )
- **LGAs with new cases in the last 3 days, but 1st time since 1st July: Singleton (A), Snowy Valleys (A)**

Row Labels	01	02	03	04	05	06	07	08	09	10	11	12	13	14	15	16	17	18	19	20	21	22	23	24	25	26	27	28	29	30	31	01	02	Total	
Ballina (A)	1																																	1	
Bathurst Regional (A)																																		1	
Bayside (A)		2		1	1							6	3	3	1	1	1	1	3	3	3	4	2	1	4	3	6	7	4	5	2	2	3	81	
Blacktown (C)	1				1	1	1	1	1	2	1	1	1	3	5	4	3	2	5	6	12	9	20	13	8	15	24	15	13	14	24	16	10	231	
Blue Mountains (C)																	1	1															3		
Burwood (A)	2					2	2				1										4		1		2								15		
Cabonne (A)																				1													1		
Camden (A)				1											1						1			1	3	3	3	1	1	1	2	3	22		
Campbelltown (C) (NSW)		1	4			1	1			2					1	1			1	1	5	2	2	2	6	12	9	12	17	8	14	20	10	130	
Canada Bay (A)				2								1														1				1	2	9	9		
Canterbury-Bankstown (A)	3	4	1	1	3	5	8	13	10	12	10	8	14	5	7	14	9	12	11	18	31	30	30	36	49	28	32	68	43	51	83	50	38	737	
Central Coast (C) (NSW)		2									1												4		1								9		
Cumberland (A)	1	2	1	2		2	2	1	2	5	2		3	1	8	7	6	11	5	22	21	15	29	22	32	15	8	34	24	37	27	29	36	412	
Dungog (A)																														1			1		
Fairfield (C)	3	4	3	1	2	11	10	9	19	59	74	38	48	41	56	60	63	50	27	33	40	29	37	33	17	26	39	50	21	22	43	15	14	997	
Georges River (A)	6	2	3	2	1	1	5	1	2	3	2	2	4	5	2	1	3	3	3	7	10	6	3	6	3	5	3	7	5	4	7	1	121		
Goulburn Mulwaree (A)																										1								1	
Gunnedah (A)																	1																	1	
Hawkesbury (C)										3		1					2																	6	
Hornsby (A)				3													1										2							6	
Hunters Hill (A)		1																																1	
Inner West (A)		1							1	1		1			2	1			1			2	2				3	3	5	1	5	12	4	4	49
Inverell (A)	1																																	1	
Ku-ring-gai (A)																								1										1	
Lake Macquarie (C)																																		4	
Lane Cove (A)																																		1	
Liverpool (C)		1			2	4	1	4	2	3	8	1	7	7	8	14	3	20	4	5	12	14	7	14	11	9	15	37	26	22	23	23	7	314	
Mid-Coast (A)											3																							3	
North Sydney (A)		2															1																	3	
Northern Beaches (A)										1	1	1					1			2	2	1		2	9	2	1	1	2	1	1	2	3	31	
Parramatta (C)	3				2		1	4			3	1			2	1		1	3	6	4	10	2	3	10	9	2	9	6	11	3	8	3	107	
Penrith (C)										4			2	1	1	2	1			1	1	1		1		1	3	6	3	1	1	1	10	41	
Randwick (C)	1	5		7	2	4	2	3	2	3					1		5	1	2	1		3	1			1	2	1						50	
Ryde (C)												1									1		3		1	1								17	
Singleton (A)																													3	3	2	1	1	17	
Snowy Valleys (A)																																		1	
Strathfield (A)	3	1	1	1											1							4		2	2	2	3	2	6	4	5	7		44	
Sutherland Shire (A)						1	1		4	2		4	3	3				1		3		1	3	4	2							1	2	37	
Sydney (C)	1	4		1						7	1	3	1	1		2				1		2	3	1	1	1	2	4	1		2	1	1	41	
The Hills Shire (A)				5	3										2											5	1		2	2	5	1	2	32	
Waverley (A)	3	1	4	5	2		3	1	2	2	8	5	1	1	1	3	2			1	1		1	3				1						54	
Willoughby (C)	1			1																														9	
Wingecarribee (A)																	1	1						1								1	2	9	
Wollondilly (A)																																1		5	
Wollongong (C)														1												1				2		1		11	
Woolahra (A)	1	2			1				1		3				1																			44	
(blank)	1	6	2		1	1		1	2	2			1	1		4	1	1	1	1		3		1	6	2		3			1	1	1	44	

- Cases reported last 4 days from: Canterbury-Bankstown 222, Cumberland 129, Fairfield 94, Liverpool 75, Blacktown 64, Campbelltown 52, Inner West 25, Parramatta 25, Georges River 17, Strathfield 16, Penrith 13, Bayside 12, The Hills Shire 10, Camden 7, Ryde 7, Canada Bay 5, Northern Beaches 4, Sydney 4, Sutherland Shire 3, Willoughby 3, Overseas 3, Waverley 3, Wollondilly 1, Lane Cove 1, Central Coast 1, Lake Macquarie 1, Dungog 1, Wingecarribee 1, Singleton 1, Snowy Valleys 1, Burwood 1.

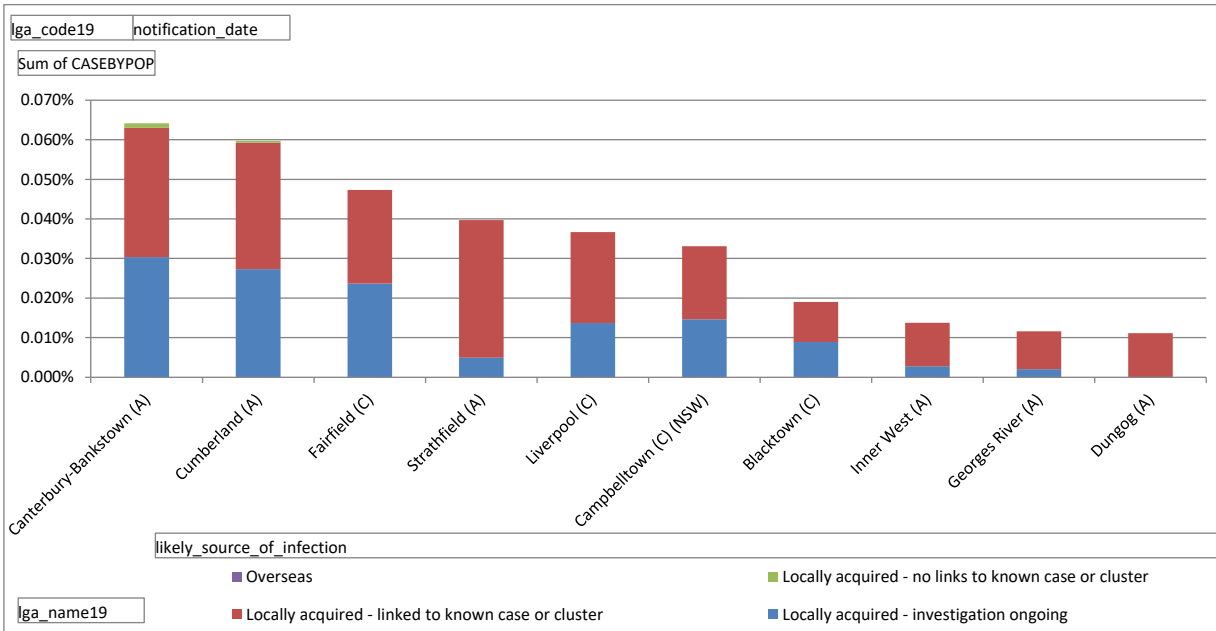
- "(blank)" in the area is used to identify "Overseas" cases

## NSW Trends of the TOP-10 "Hotspot" LGAs (the areas to avoid!)



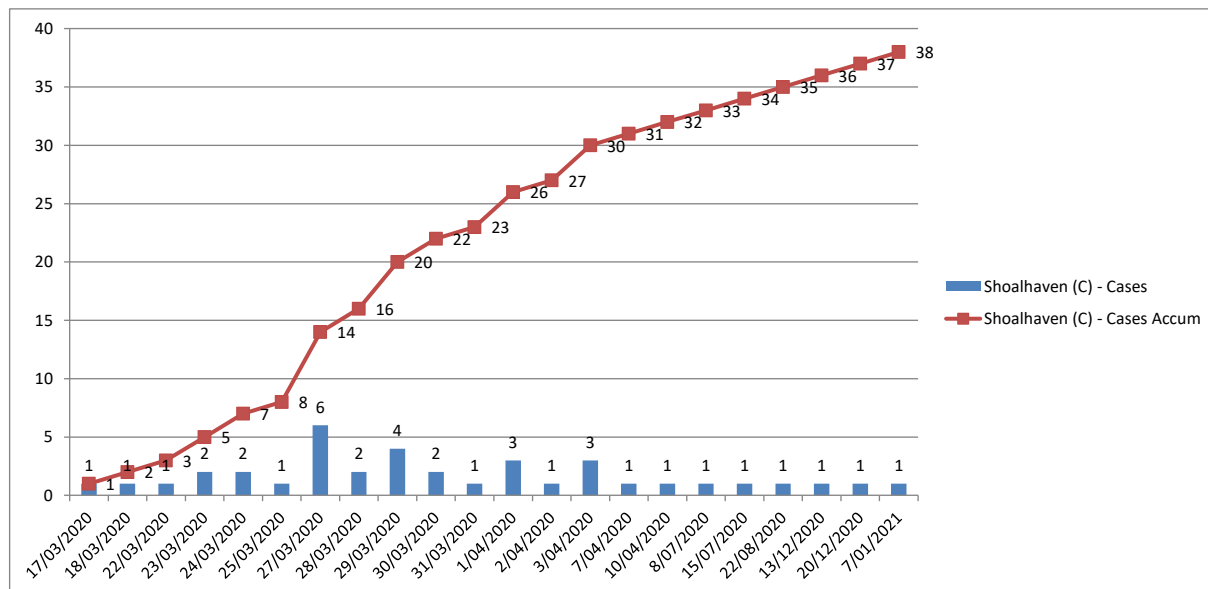
- Locally acquired cases make up the majority of the cases in NSW

## TOP-10 NSW LGAs with highest new cases proportional to their population for last 4 days



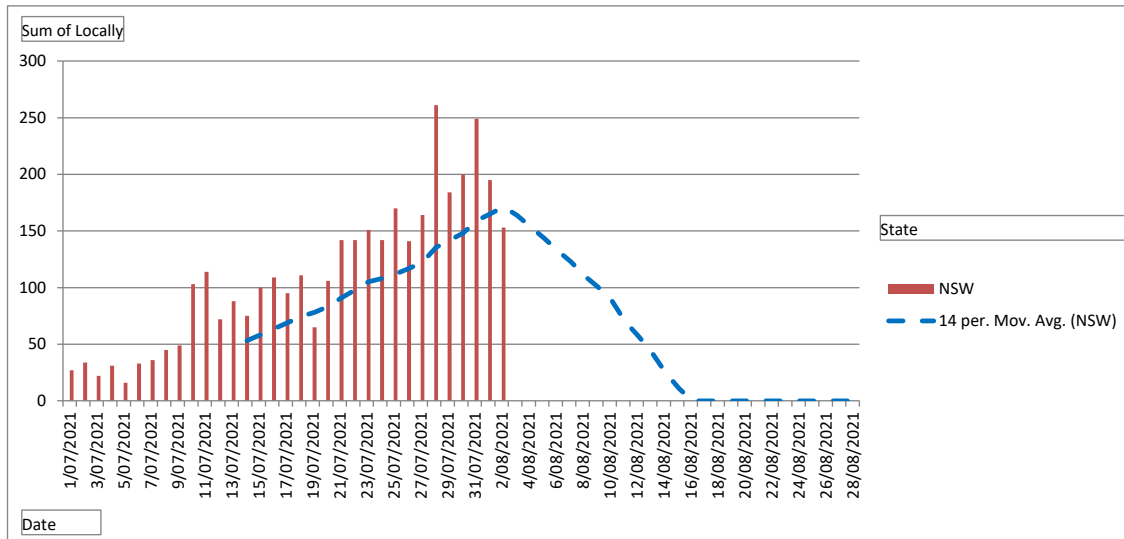
- Canterbury-Bankstown has the highest new cases per population now
- Strathfield once again has more new cases per population than Liverpool, Campbelltown, Blacktown and Georges Basin; but Strathfield is not in "tight" lockdown group of LGAs**

## SHOALHAVEN Cases



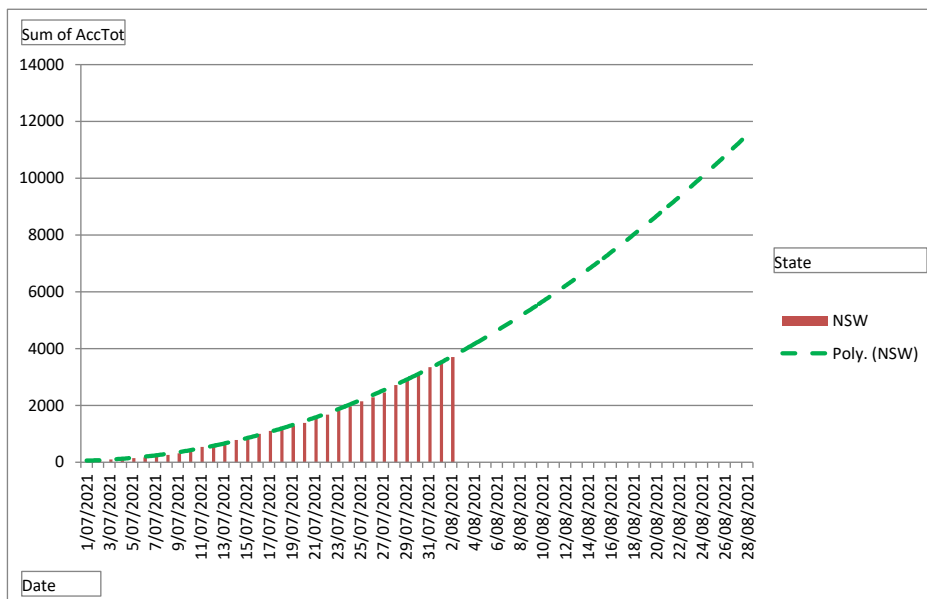
- Last reported case in the Shoalhaven LGA was on 7th Jan ; and it was overseas acquired
- 13 cases reported in the Wollongong LGA from 1st July ; 5 reported last week: 2 on 27th and 3 on 28th July**
- 4 cases reported in the Wingigarabee LGA from 1st July ; 1 reported last week: 1 on 31st July**

## PROJECTIONS of Cases using last 14 days of data - If cases reduce gradually



- *Projecting the volume of cases for the next 14 days, using the daily moving average of the last 10 days, the earliest possible end of the lockdown, if cases start to lower daily from tomorrow, would be 16th Aug*

## PROJECTIONS of Cases using last 14 days of data - If cases increase as trend



- *If new cases keep maintaining the current trend, we could have more than 10,000 cases in total in NSW by 28th Aug (3x the current caseload - that would put dangerous stress on our health system)*